



## BASIC INFORMATION PACKAGE

---

GLOBAL  
FORUM ON  
CYBER  
EXPERTISE

# INTRODUCTION

## BASIC INFORMATION PACKAGE

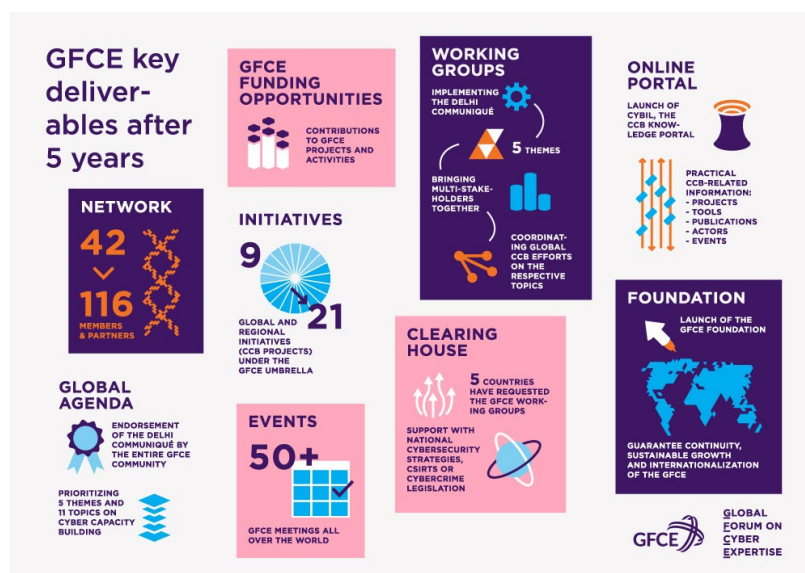


GLOBAL  
FORUM ON  
CYBER  
EXPERTISE

The **Global Forum on Cyber Expertise** (GFCE) aims to strengthen cyber capacity and expertise globally through the facilitation of international multistakeholder collaboration.

Every citizen of the world should be able to fully reap the benefits of ICT through a free, open, peaceful and secure digital world. Building cyber capacity provides the necessary foundation for countries to strengthen their cyber resilience through developing skills and capacity that address threats and vulnerabilities arising from cyberspace.

As the global platform for the coordination of cyber capacity building, the GFCE provides a dedicated, action-oriented and informal platform for policymakers, practitioners and experts to share knowledge, expertise and best practices on key thematic issues of cyber security and capacity building.



### Who is the GFCE?

The GFCE was born out of the Global Conference in Cyber Space (GCCS) in the Hague, hosted by the Government of The Netherlands. The GFCE has steadily grown from a group of 42 initial supporters into a broad network consisting of **86 Members** and **37 Partners** from all regions of the world and including countries, governmental entities, international organizations, industry, NGOs, academia, technical groups and civil society stakeholders.

GFCE Members are represented by two Co-Chairs, **Ms. Carmen Gonsalves** of The Netherlands and **Mr. Ajay Prakash Sawhney** of India. The governance structure is further strengthened by the **GFCE Foundation Board**, which gives strategic guidance, promotes continuity through outreach and provides a visible point of communication for the GFCE.

The **GFCE Advisory Board** was established to provide a voice for civil society and other underrepresented stakeholder groups. The role of the Advisory Board is to provide advice and support in formulating decisions on the GFCE's functioning, activities and overall strategic direction.

The GFCE is also supported by a Secretariat, which provides logistical and administrative support to the community.



### How does the GFCE work?

The GFCE strengthens international cooperation on cyber capacity building by connecting needs, resources and expertise and by making practical knowledge available to the global community.

GFCE Members and Partners collaborate with each other and engage with the broader cyberspace communities to identify successful policies, practices and ideas for cyber capacity building and amplify these on a global level.

In 2017, at the Global Conference on Cyber Space (GCCS) in New Delhi, the GFCE community endorsed the Delhi Communique, setting out a **Global Agenda for Cyber Capacity Building** and prioritizing 11 topics under 5 broad themes on cyber capacity building. These themes became the GFCE Working Groups.



Today, the Working Groups are the engine and lifeforce of the GFCE with over 85% of the community involved in at least one group. For coherence and synergy, the activities of Working Groups are divided across common goals of avoiding duplication of efforts (**Coordination**), improving the efficiency and effectiveness of CCB projects (**Knowledge Sharing**), filling capacity gaps (**Match Making**) and filling knowledge gaps (**Global CCB Research Agenda**).

### Match Making

Recognizing that cyber capacity building can never be a one-size-fits-all model and that tailored assistance to local contexts is a determinant of successful capacity building projects, the GFCE plays an important role for the coordination of capacity building through its clearing house function. Through the Working Groups, the GFCE matches countries that have specific CCB needs with country, private sector and civil society donors and implementers that can provide key capacity building services.

# INTRODUCTION

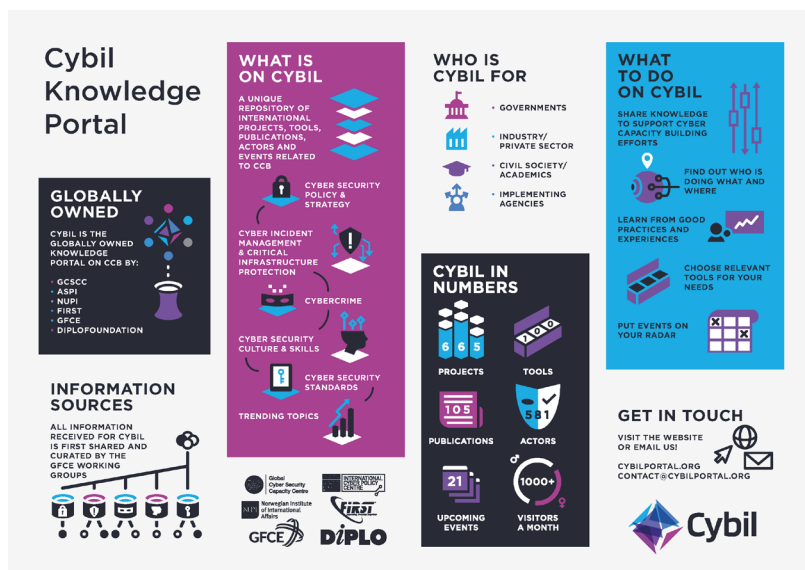
## BASIC INFORMATION PACKAGE



GLOBAL  
FORUM ON  
CYBER  
EXPERTISE

### Cybil Knowledge Portal

This globally owned one-stop knowledge hub brings together resources on international cyber capacity building. It is a unique source of information on cyber capacity building, containing over 500 projects, 72 tools, 74 publications, 421 actors and 39 upcoming events. **Cybil** was launched by the GFCE in October 2019, together with Cybil Portal Group knowledge partners **NUPI**, **Oxford GCSCC**, **FIRST**, **DiploFoundation** and **ASPI**. Content on Cybil is provided and updated by the GFCE community through the GFCE Working Groups.



### Global Cyber Capacity Building Research Agenda

Existing knowledge gaps constitute a significant obstacle to the design and delivery of effective cyber capacity building. Through the Working Groups, GFCE Members and Partners identify such gaps and develop actionable research proposals that can inform cyber capacity building projects with the aim of addressing knowledge gaps, helping the GFCE community to achieve their strategic and operational goals.

The GFCE is collecting and prioritizing these research needs into a Global Cyber Capacity Building Research Agenda. In August 2020, the **GFCE Research Committee was established** to support the development and delivery of the annual Global Cyber Capacity Building Research Agenda.

